

Norge - Noreg (The Kingdom of Norway)

Population: 4,955,800

12.5 P/km²

GDP/P.c \$88,590

HDI 0.938 (1=max)

Five national minorities and one Indigenous
Official languages: Norwegian/New Norwegian,
Sami, Kvaani/Finnish.



The Kings flag (since 1280)



State flag



Trade & National flag



Sami flag



State Arms

EU relations

Voted no to EEC/EU in 1972 and 94

EEA agreement EFTA-EU

[The Schengen Agreement](#) basically operates the EU+EFTA as a single state regarding borders.

Economy

large state ownership

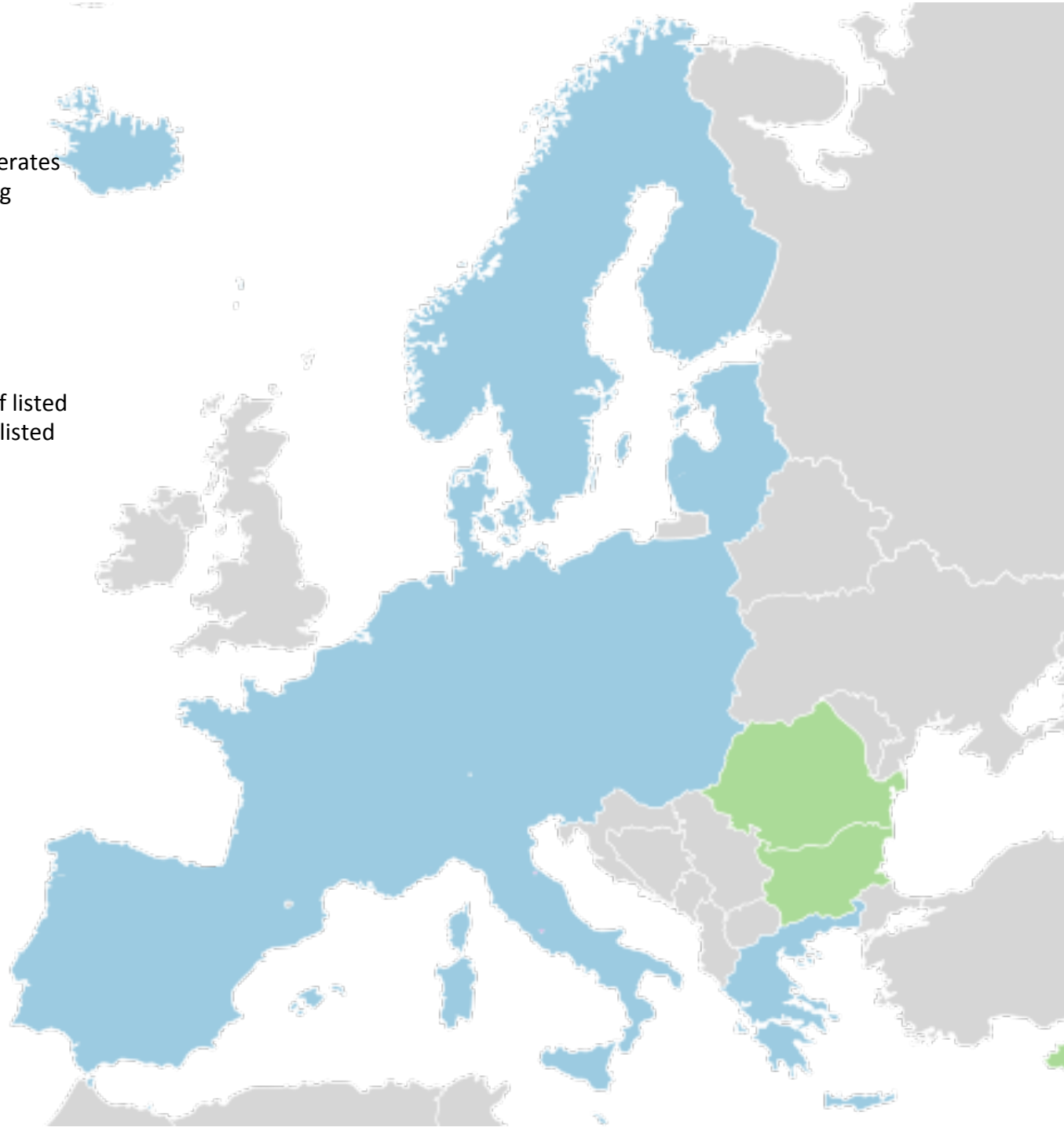
5th largest oil exporter

3th largest gas exporter.

The state «Oil fund» controls 1,25% of listed shares in Europe and 1% of the global listed shares.

Industries

- Oil/Gas
- Shipping fleet
- Fishery
- Aqua culture
- Minerals
- Tech. Industry
- Aluminium
- Hydro power
- Forestry
- Agriculture
- Military industry



The Norwegian State territory

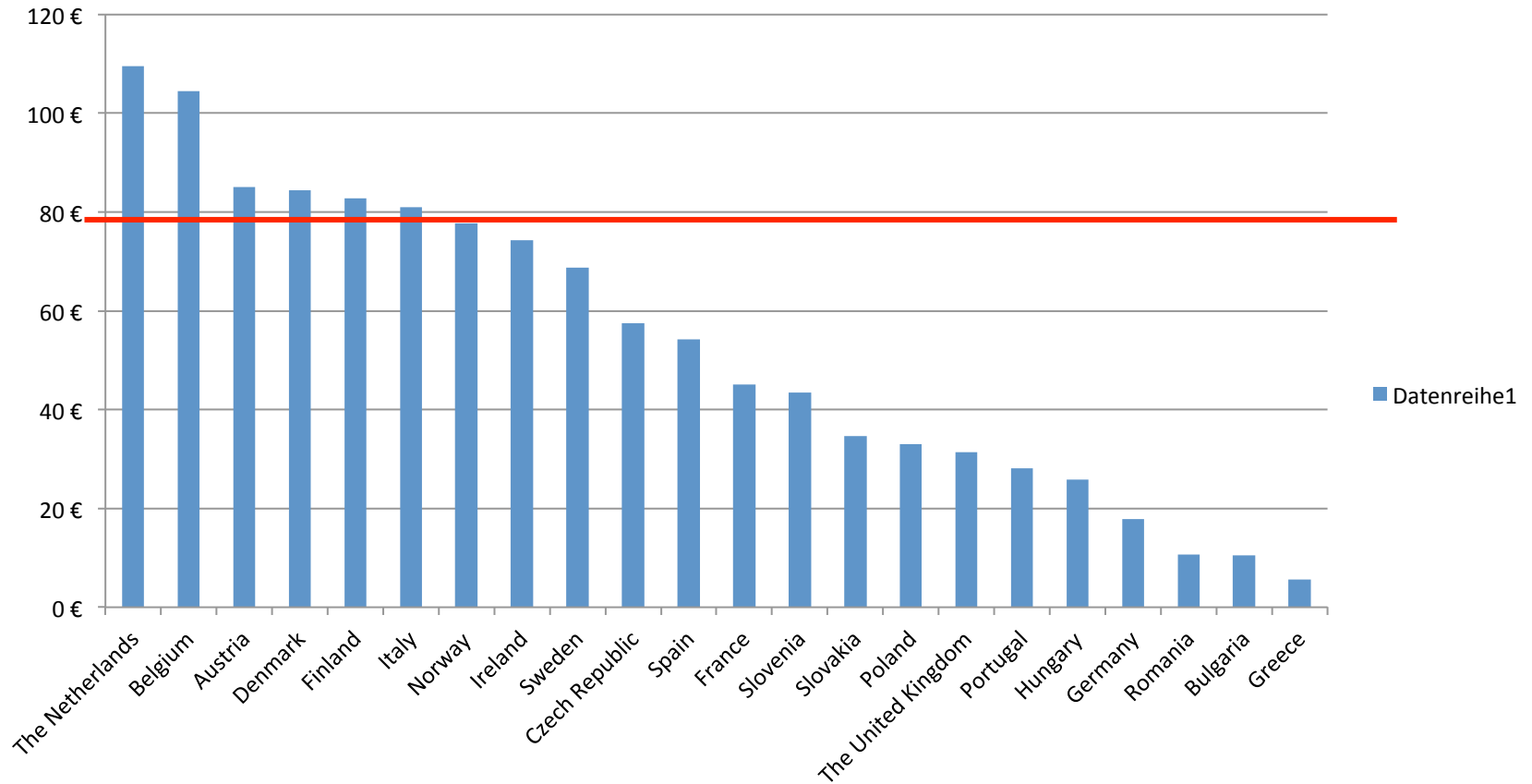
Sea territory incl Norwegian economic zone* 2 600 000 km²

Main land 324 000 km²
Islands (Ice sea) 62 000

Based on consensus amongst coastal states and UNCLOS



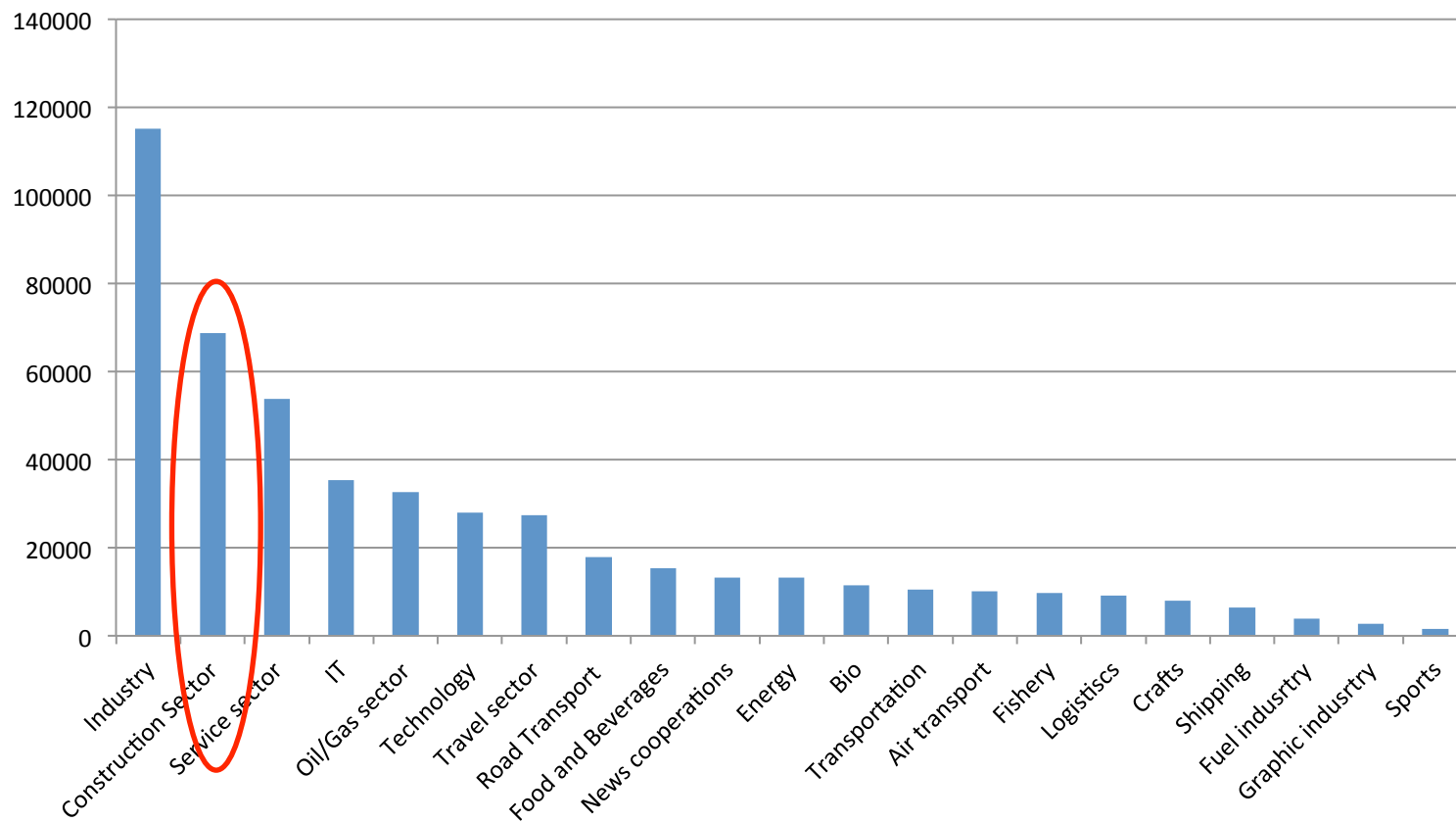
Precast structures pr capita EU/EØS



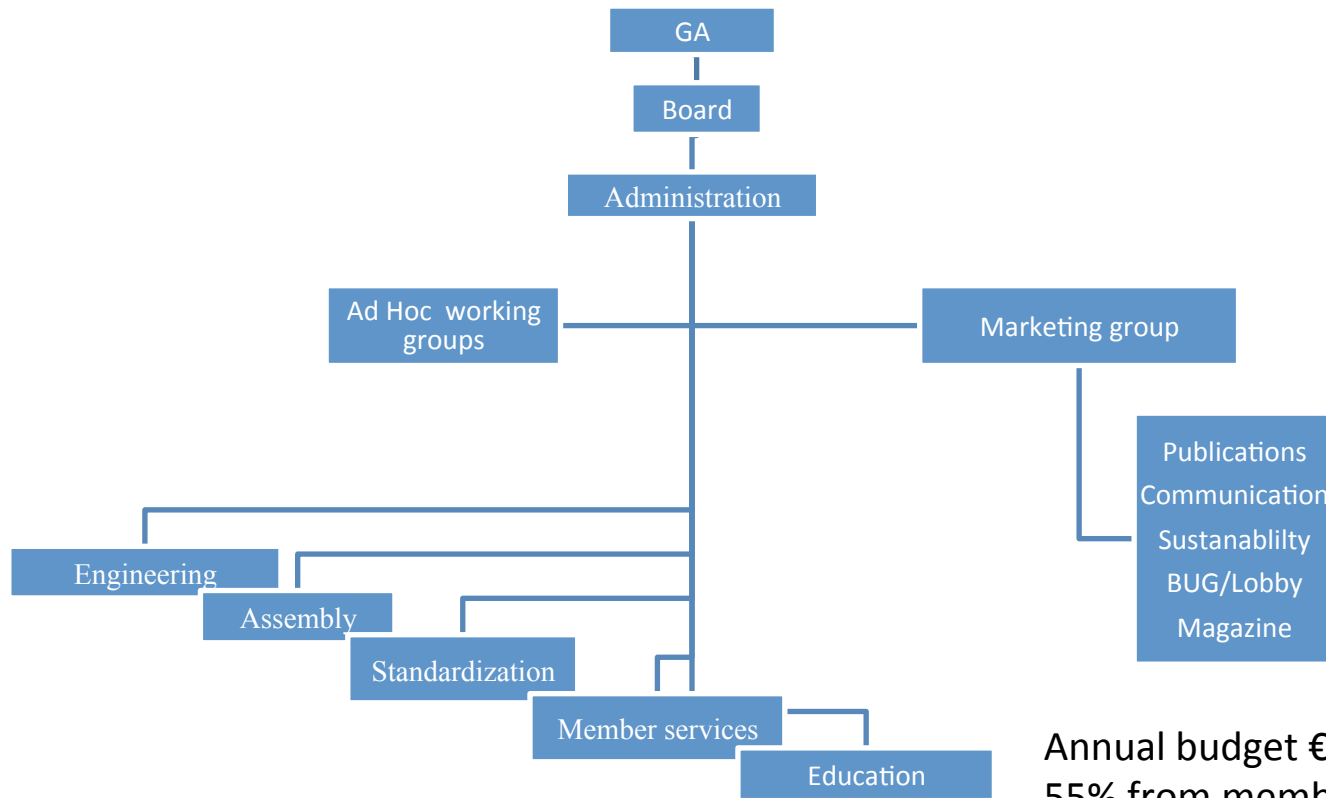
Eurostat 2009

The Confederation of Norwegian Enterprise (NHO)

21 national sector federations



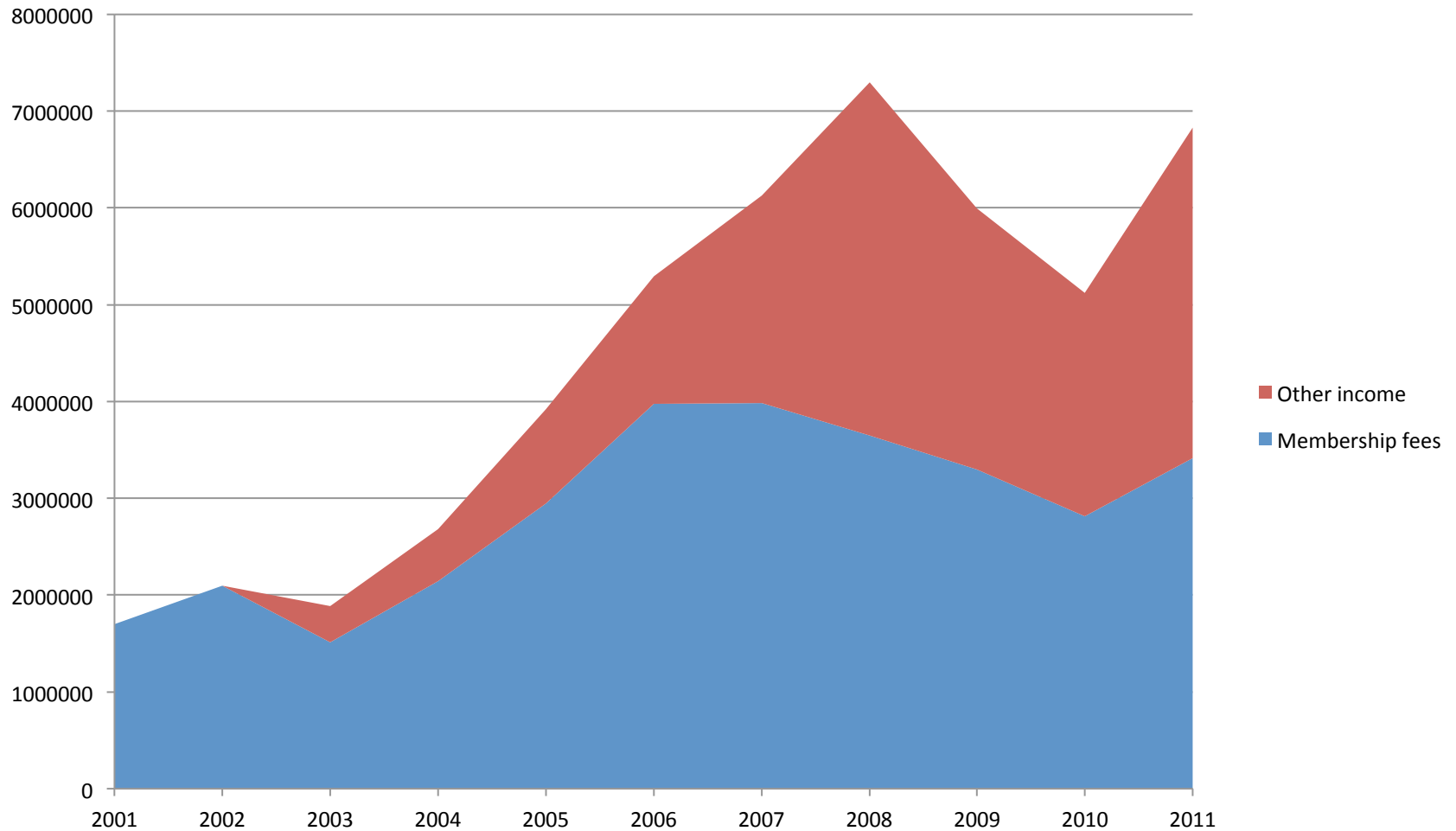
The Norwegian Precast Concrete Association



Annual budget €900 000
55% from member fees
45% Other activities

Ekstensive use of consultants on case to case basis, no specialized staff on the payroll

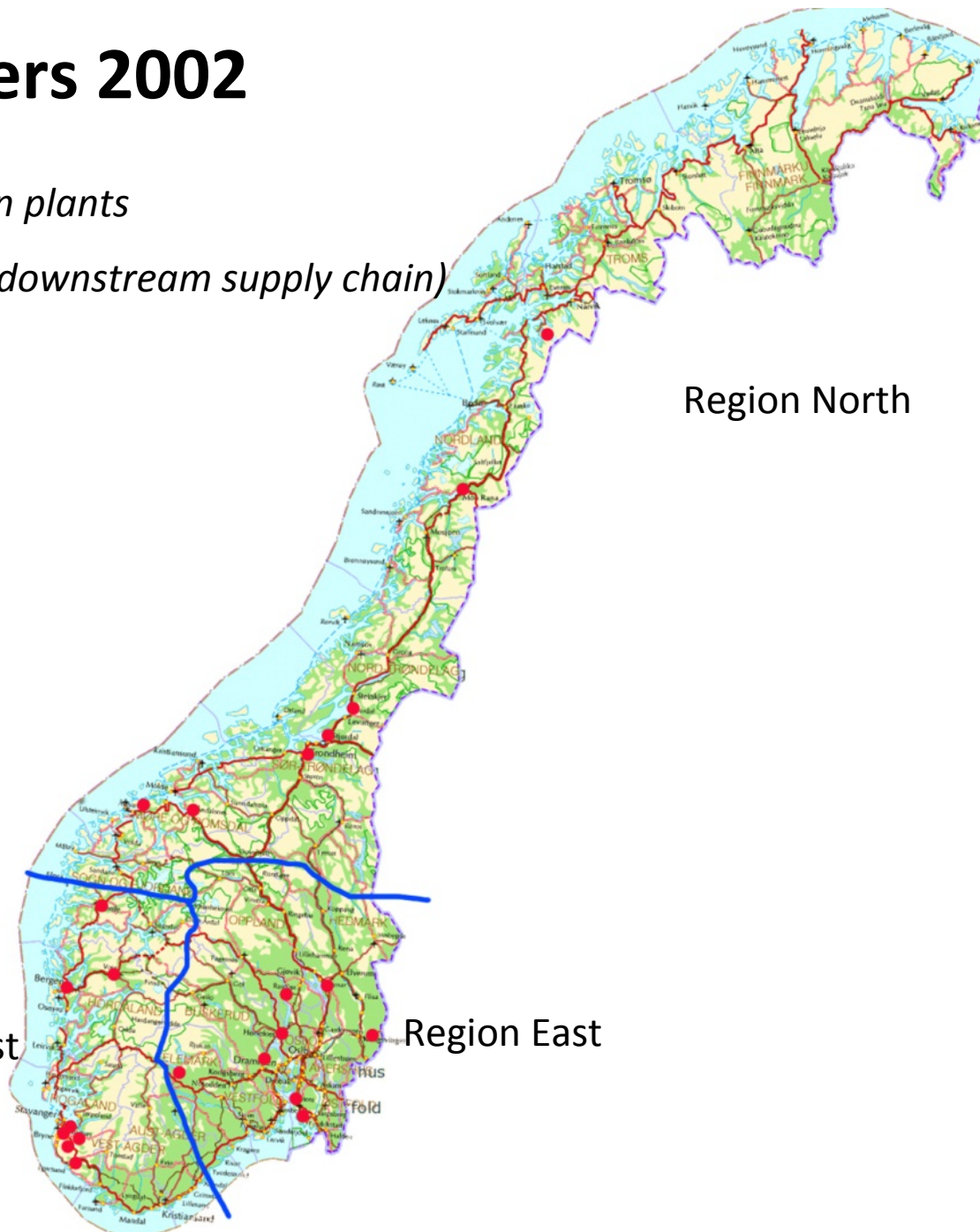
Diversified Economy



Members 2002

25 production plants

10 Partners (downstream supply chain)



- VOSS CEMENTVAREFABRIKK LL
- Systemblokk Telemark AS
- Contiga AS Roverud
- Førde Sementvare AS
- Contiga AS Nord
- Spenncon Hedmark AS
- Helgeland Betong AS
- Hå Element AS
- HÅRR BETONGPRODUKTER AS
- Loe Betongelementer AS
- Nordland Betongelement AS
- Opplandske Betongindustri AS
- Elementpartner AS
- AS BETONG
- Block Berge Bygg AS
- Contiga AS Moss
- Contiga AS Fredrikstad
- Contiga AS Oslo
- Nor Element AS
- Overhalla Cementvare AS
- Spenncon AS
- Spenncon AS Bergen
- Spenncon AS Hjørungavåg
- Spenncon AS Hønefoss
- Spenncon AS Sandnes
- Spenncon AS Trøndelag
- Spenncon AS Trøndelag

Region North

Region West

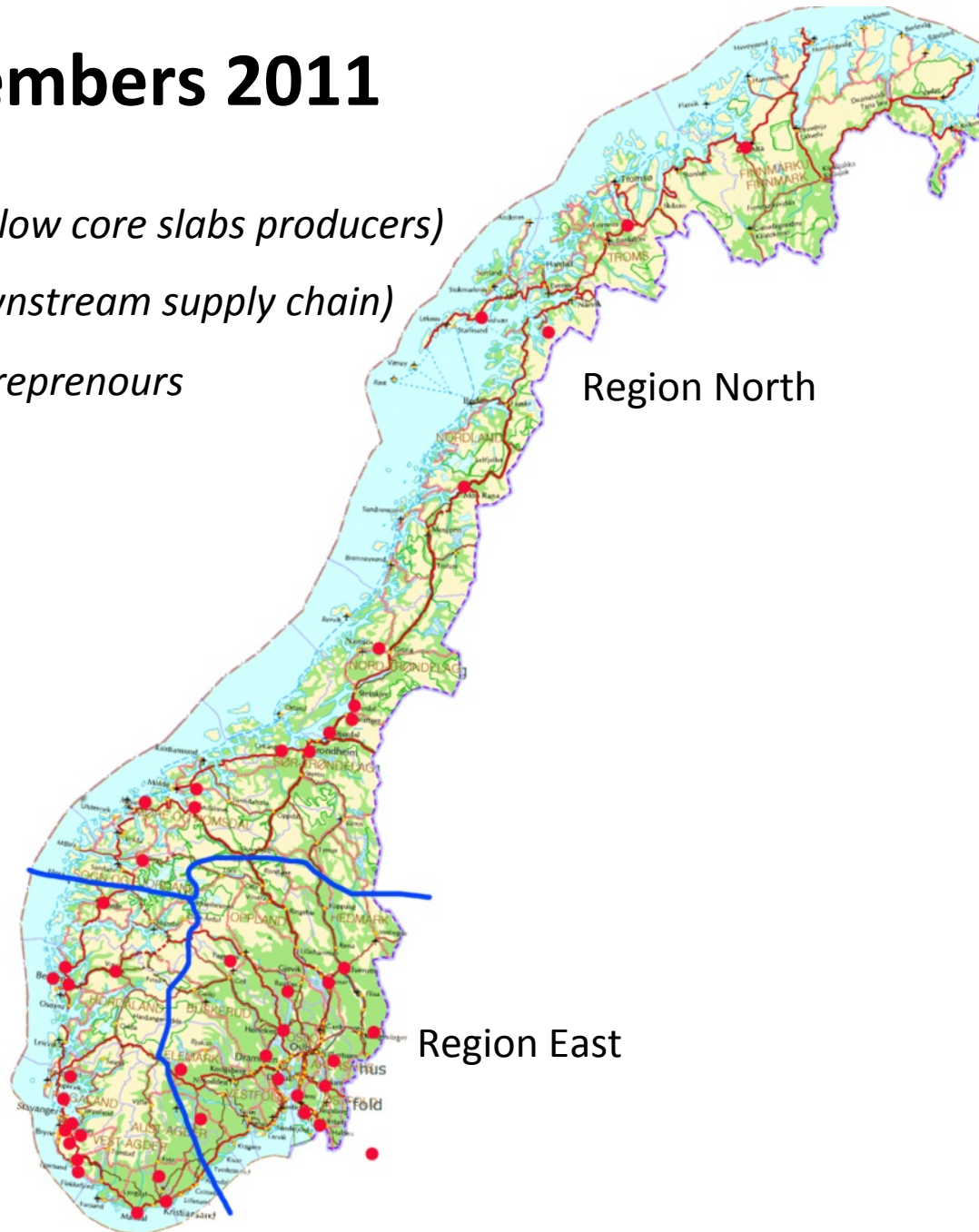
Region East

Members 2011

45 Plants (17 hollow core slabs producers)

26 Partners (downstream supply chain)

10 Assembly entrepreneurs



Region North

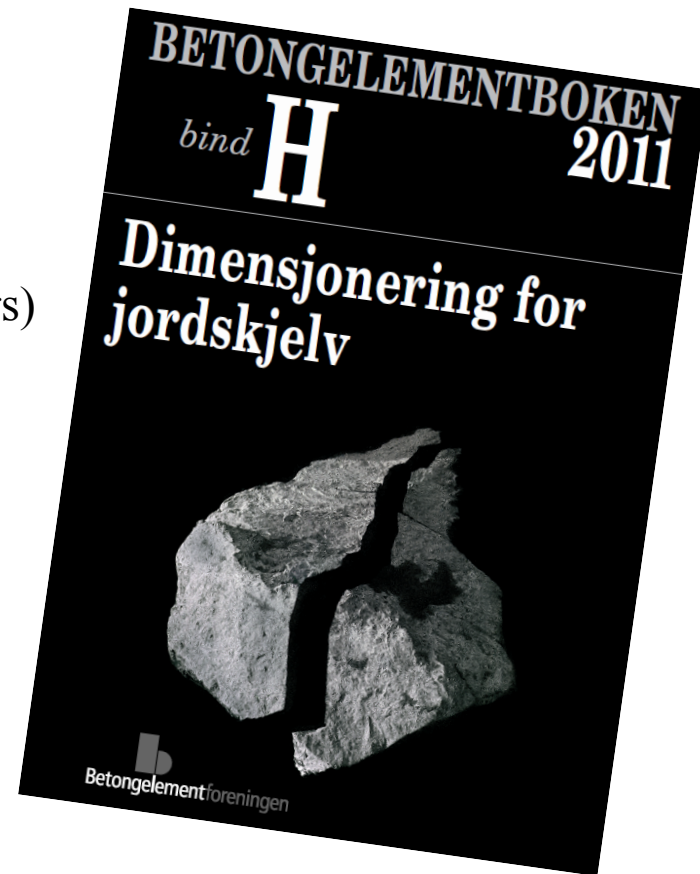
Region West

Region East

- Stryn Betongelement AS
- VOSS CEMENTVAREFABRIKK LL
- Kynningsrud Prefab AS
- BE-Element AS
- Cementprodukt AS
- Systemblokk Telemark AS
- Ryfoss Betong AS
- Vestfold System Element AS
- Element NOR AS
- Sandeid Sement AS
- Egersund Betongteknikk AS
- Buskerud Betongvarefabrikk AS
- Finnøy Betong AS
- Byggimpuls AS
- Brødrene Vangstad AS
- Contiga AS Roverud
- Sotra Cementvarefabrikk AS
- Førde Sementvare AS
- Con-Form Lunde AS
- Con-Form Orkanger
- Con-Form Trøndelag
- Contiga AS Nord
- Grytnes Betong AS
- Brødrene Østbye AS
- Spenncon Hedmark AS
- Helgeland Betong AS
- HÅRR BETONGPRODUKTER AS
- HÅ Element AS
- JARO AS
- Loe Betongelementer AS
- Nordland Betongelement AS
- Opplandske Betongindustri AS
- Elementpartner AS
- AS BETONG
- Block Berge Bygg AS
- CON-FORM AS
- Contiga AS Moss
- Contiga AS Fredrikstad
- Contiga AS Oslo
- Nor Element AS
- Overhalla Cementvare AS
- Spenncon AS
- Spenncon AS Bergen
- Spenncon AS Hjørungavåg
- Spenncon AS Hønefoss
- Spenncon AS Sandnes
- Spenncon AS Trøndelag
- Spenncon AS Trøndelag

Activities

- Policy process
- Courses/lectures at tech colleges/universities
- Education in cooperation with [Østfold University college](#)
- Training program for assembly managers and supervisors
- [The Design Manual](#)
- Seismic design (ad hoc project, manual and seminars)
- [EPD generator for our members](#)
- Standardization of details (Finnish model)
- www.betongelement.no www.tbox.no
www.prefab.no
- [Passive house project](#) (funded 50% by the state)
- Statistics, Prognosis and assessment of the market
- National and international standardization
- HOLCOFIRE project
- BIBM membership
- Nordic Precast Concrete Meetings/Network





What's in it for me?

The members P/E perspective

- Policy process & sector politics
 - (potential huge costs/vague earnings)
- International activities/standardization
 - (huge costs/slow earnings)
- Conclusion; *Most (not all) «abstract» activities are important, but all «abstract» activities are a potential threat for an association (loyalty, identification etc...)*

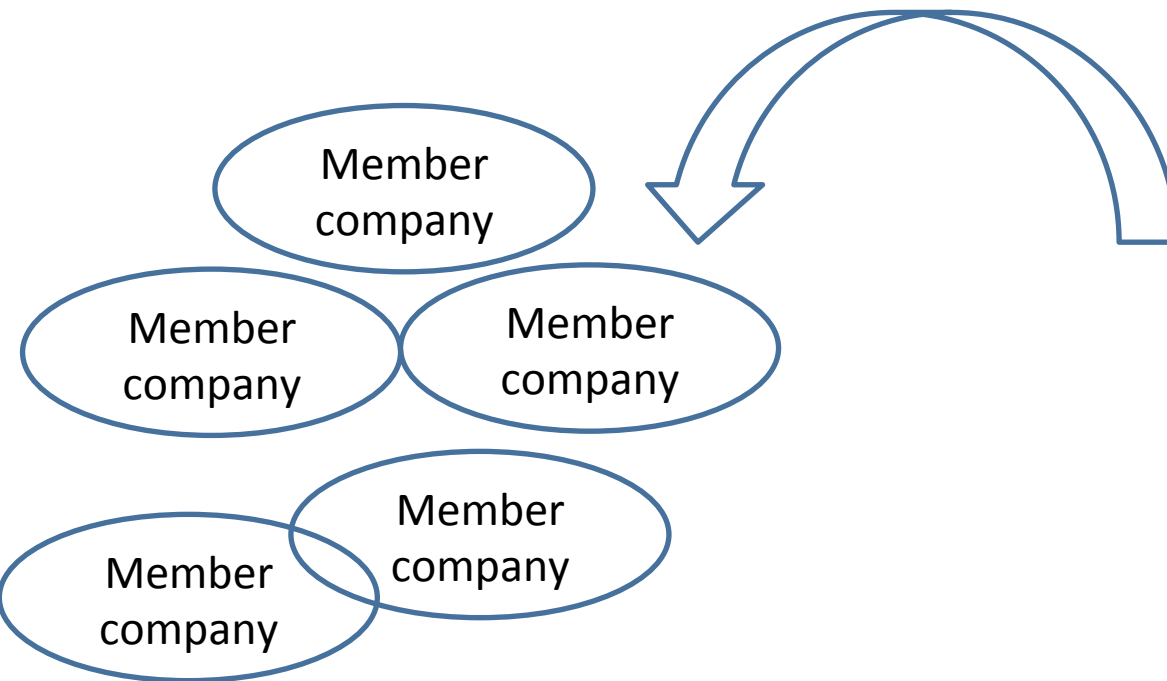
The glue

- Activities on behalf of individual members.
- EPD generator & CE application
- Tbox – single family house
- Communication channel for members (case to case basis)
- Insurance
- Standard delivery/assembly terms (associations recommendations)
- Juridical support
- Other offers for our members.
- Professional & social networking
- Transfer of practice/learning



Insurance

- Occupational injury insurance (obligatory)
- Group life insurance (voluntarily)



Broker (Marsh AS – Non Marine)

Group Reinsurance offer through third part.
Proven to be stabile and reliable for more than ten years.